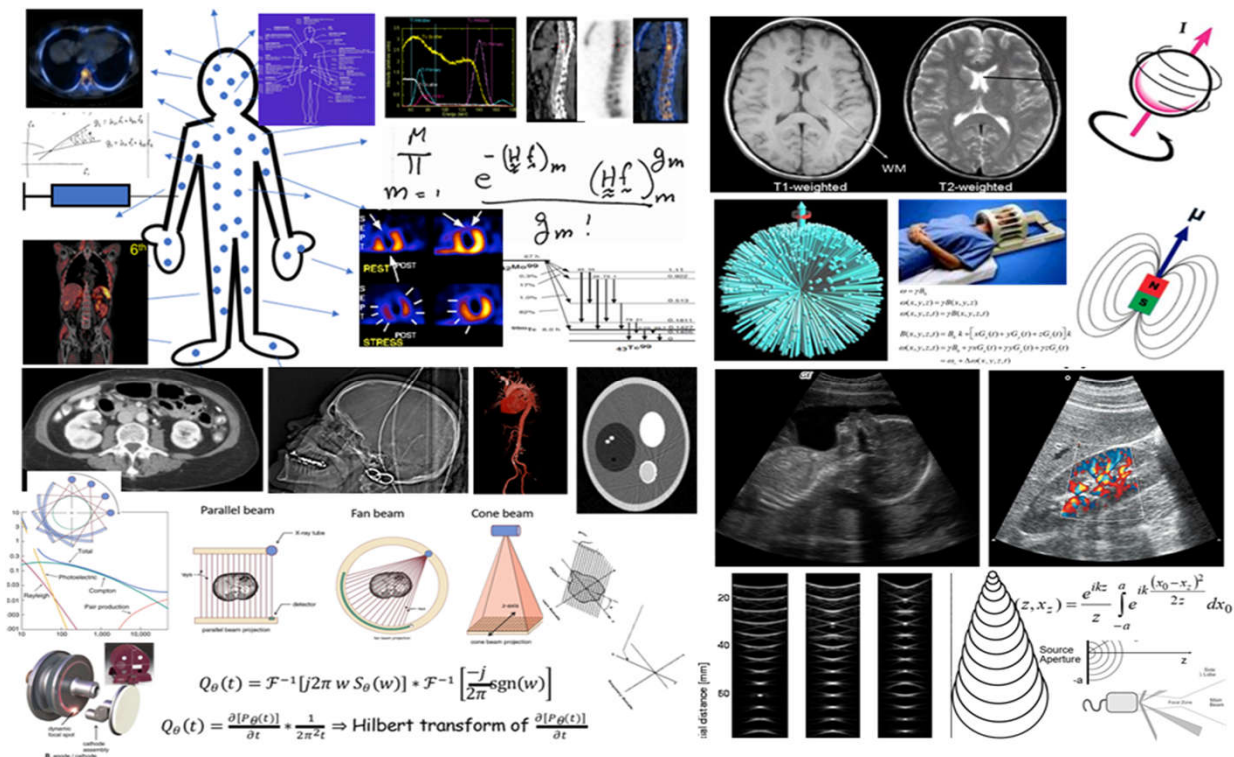


# OPT/BME 638 (Spring '23)

## Advanced Medical Imaging

Dive into advanced topics related to

- Modalities: MRI, CT, Nuclear, and Ultrasound
- Signal processing, image formation, reconstruction
- Math, physics, instrumentation, demos
- Excellent student-to-professor ratio!



### Instructors:

- Russell Witte, PhD \*
- Lars Furenlid, PhD
- Srini Vedantham, PhD
- Beth Hutchinson, PhD

### Course Info (3 credits)

- T/Th 3:30-4:45pm (Jan 12)
  - OSC 432
  - HW + Exams
- \* [rwitte@arizona.edu](mailto:rwitte@arizona.edu)